

IP65 RATING PROTECTION

Outdoor Digital Signage series is designed to withstand harsh conditions involving humidity, dust, rain, wind, dirt, and direct sunlight. Manufactured to IP65 Ingress Protection Rating Standard.



TEMPERED AR GLASS SHIELD

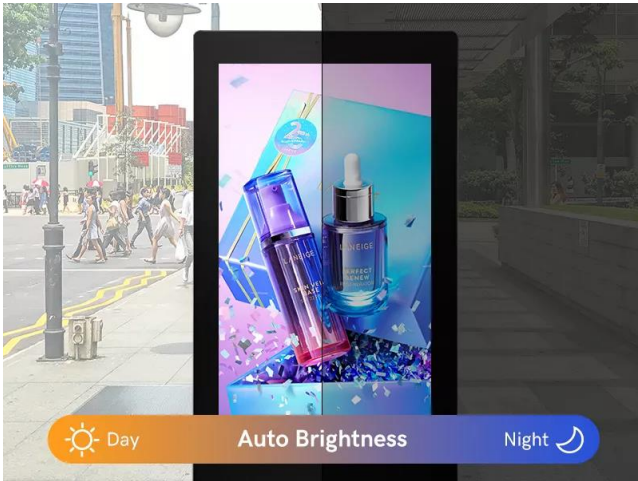
Outdoor Digital Signage comes with an AR (anti-reflective) Tempered Glass Shield of 5mm that protects from impact and glare at the same time with a matte finish that eliminates glare from direct light.

EXCELLENT HEAT DISSIPATION

The excellent heat dissipation performance of this product is complemented by its high-quality components, which work in tandem to ensure maximum thermal stability and reliability.



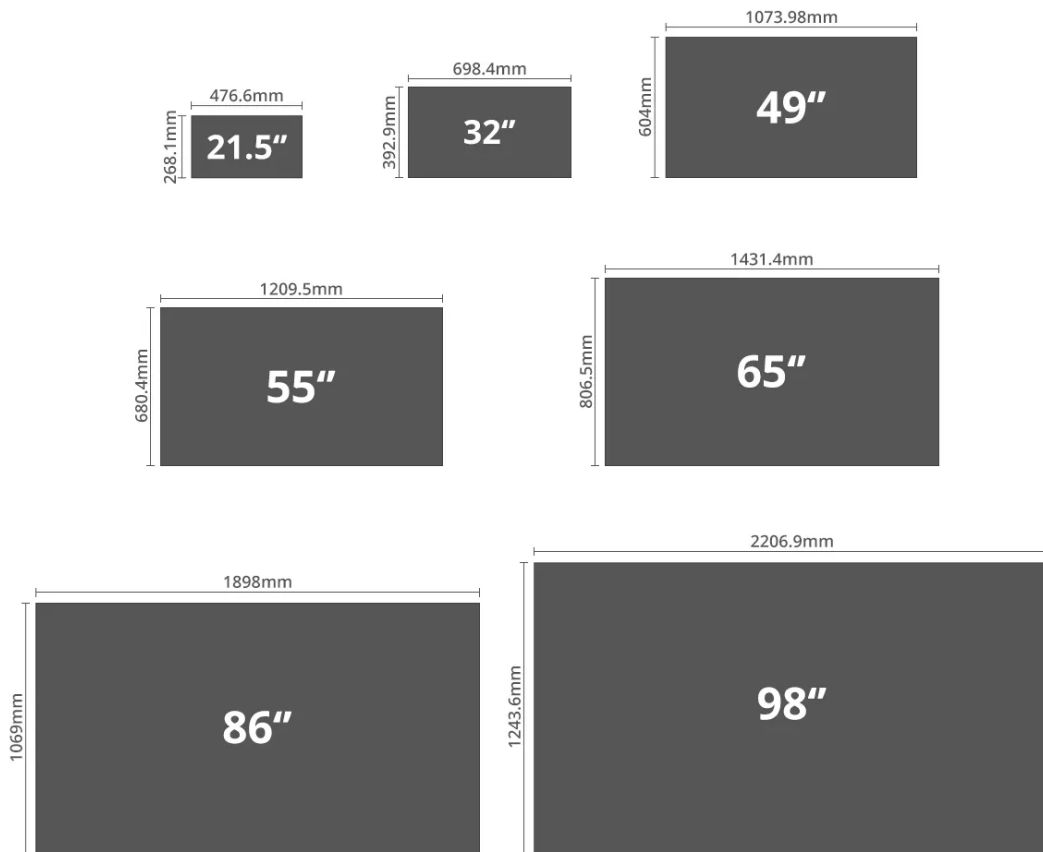
AUTOMATIC BRIGHTNESS ADJUSTMENT



This feature adjusts the brightness during the night time which is helpful to those with light sensitivity. Similarly, the brightness sensors automatically adjust brightness during the sunlight to make the screen fully readable make the display provide for continuous operation day and night.

CHOOSE THE SIZE FOR ADVERTISING DISPLAY





DIGITAL SCREEN DISPLAY AREA





Outdoor IP65
Protection Level



3000 NIT
3000 Nits Brightness



Android Media
Player



Temperature
Control



24/7 Commercial
Grade

Built for outdoor activities

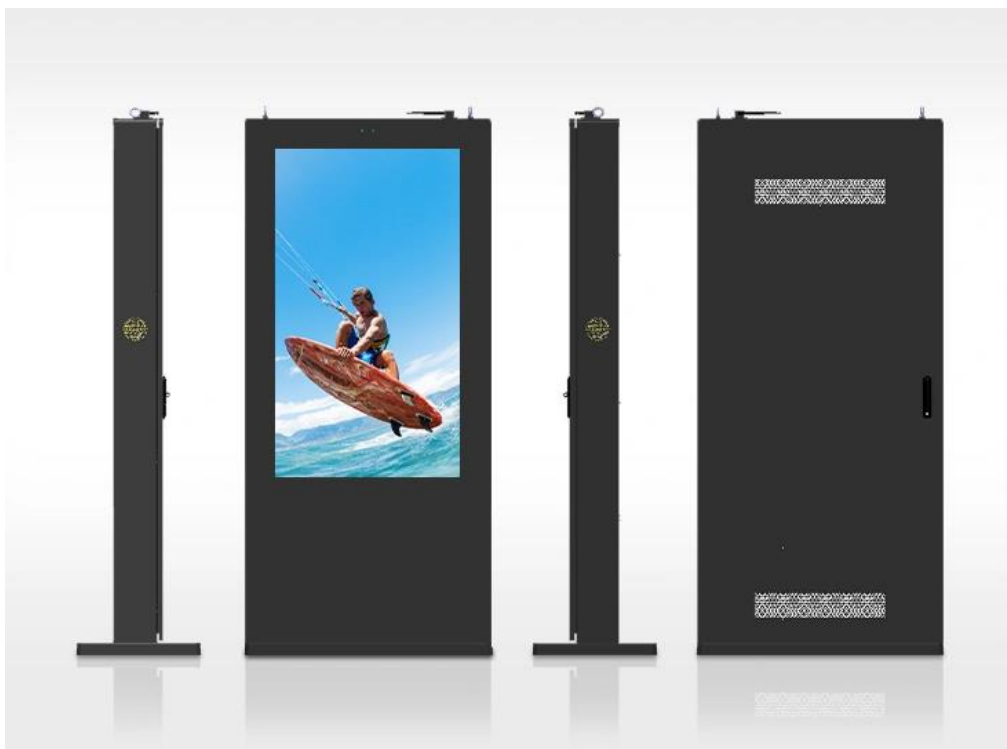
Designed for the outdoors, it combines vandal-resistant steel housing, high-gloss panels and advanced temperature control. The tempered glass front and steel casing ensure the display is protected from weather conditions and dust particles, with an IP65 rating.

Slim yet sturdy design

Easily integrate custom designs from partners and tailor them to a variety of customer needs and settings. From outdoor advertising to information kiosks, outdoor digital signage can also be installed and optimized for customers based on industry purpose and use.

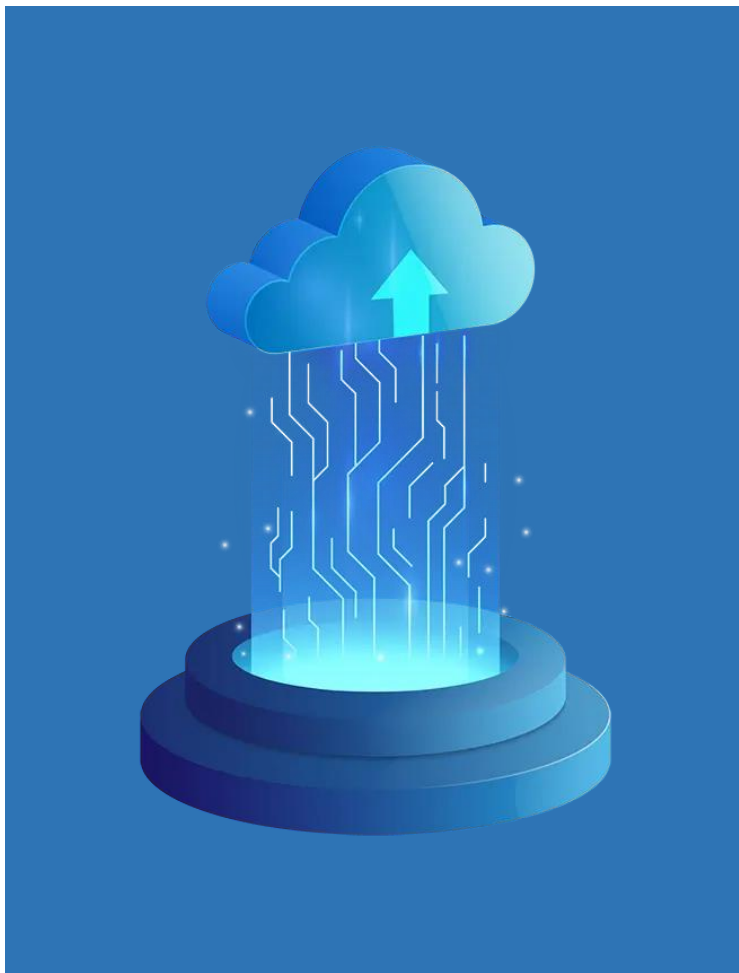
Commercial grade

The use of commercial-grade components ensures the product is designed for its purpose. The commercial-grade LCD panel has a lifespan of up to 70,000 hours, and the air-cooled temperature control system maintains the optimal operating temperature of the screen, supporting 24/7 continuous use. The 3000nit display is ten times brighter than a home TV, ensuring visibility in sunlight and bright environments, with an ambient light sensor automatically adjusting screen brightness.



Galvanized Metal Shell Process, High Temperature Spray Treatment

The shell is welded from aluminum alloy, which makes it more sturdy and lightweight as a whole. In addition, the surface is sprayed with special out-door paint. The spray paint will not come off for more than 6 years



Cloud Storage

Upload materials to the cloud for permanent storage and help you complete all commands, executing everything in the cloud.

Too many functions and toolboxes, simple and easy to use.

Unattended

Regularly turning on and off programs to save time and effort.

Multi split screen playback

Custom split screen, multiple split screens playing simultaneously.

Product Parameters And Specifications Table

Appearance

Surface	Tempered glass
Color	High end outdoor lacquered case, black border
Material	Metal plate shell

LCD Panel

Screen size	55
Resolution	1920*1080 3840*2160
active area	1209.6(H) ×680.4(V)
brightness	3000cd/m ²
visual angle	89°89°(H)/89°89°(V)
contrast ratio	1200 : 1
color depth	16.7M

Product Configure

CPU	Quad-core Cortex-A55 Main frequency is up to 1.9G,Quad-core GPU Mail-G31
storage	DDR3-2G (4GB optional)
Memory	EMMC 8G (16G/32G optional)
function	Equipped with RJ45, supports Ethernet, Wi-Fi 802.11b/g/n protocol, supports full Netcom 4G, built-in speaker, RS-232 communication protocol.
interfaces	USB*1 ,RJ45*1,SIM*1
speaker	Built-in 2 * 8 Ω 10W
light sense	Support automatic light sensing, auto-adjust the brightness
OS	Android 9.0 or more

Power Supply/Working Environment And Others

input voltage	AC 110-240V, 50/60HZ
Standby power	≅ 420W
working temperature	-10°C—50°C
Working humidity	5%-90%RH
storage temperature	-20°C~55°C
Storage humidity	5%-95%RH
accessories	Power cord, qualification certificate, warranty card, fixing screw
way to install	Floor installation